



58 Bath Row, Birmingham, B15 2DG

£100,000



58 Bath Row, Birmingham, B15 2DG

£100,000

**** For sale by online auction ** Pre-Auction offers considered ****

Great Investment Opportunity / Ideal First Home!

New to the market, this impressive ground floor two bedroom apartment is located in the popular Park Central development.

The property benefits from a long hallway with storage leading to an open plan living / dining area with access to its own private patio, modern kitchen with integrated appliances, master bedroom with en-suite bathroom, second double bedroom, a further family sized bathroom and neutral decoration throughout.

One on site secure allocated parking space.

Bath Row just a short walk from Birmingham City Centre and Birmingham New Street station.

Description



Situation

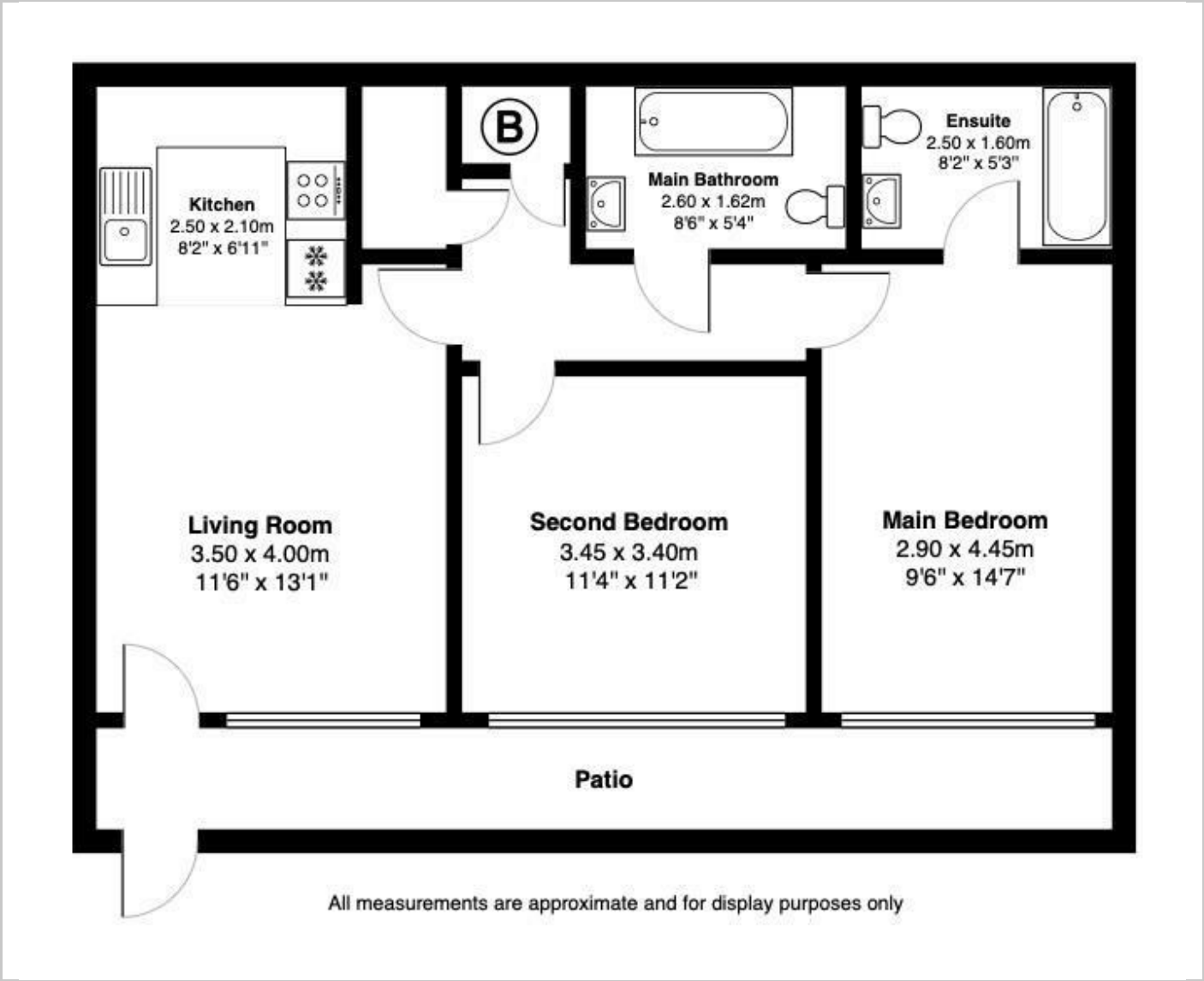


null

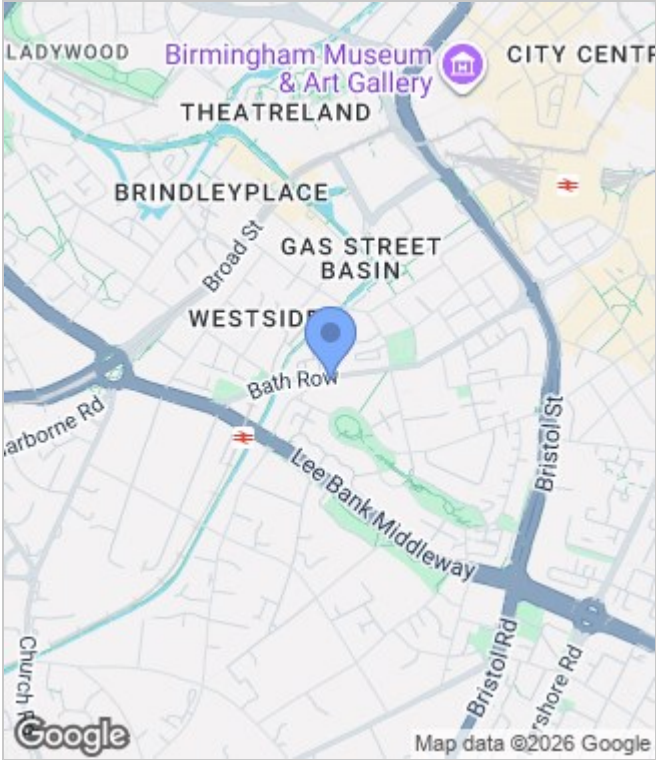
Council Tax Band: B

Available:

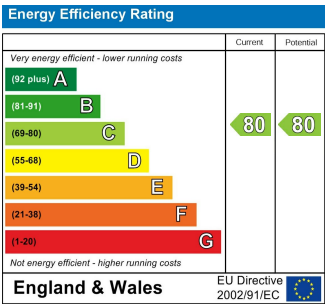
Floor Plans



Area Map



Energy Performance Graph



These particulars, whilst believed to be accurate are set out as a general outline only for guidance and do not constitute any part of an offer or contract. Intending purchasers should not rely on them as statements of representation of fact, but must satisfy themselves by inspection or otherwise as to their accuracy. No person in this firms employment has the authority to make or give any representation or warranty in respect of the property.